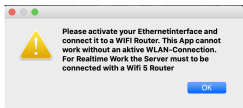


If this warning appears, there is no Ethernet cable connection between the laptop and router. Plug in the cable!!!!

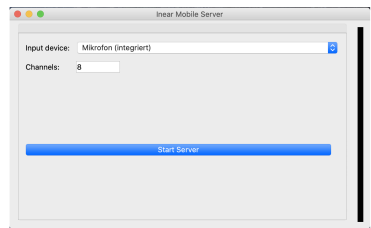


Networkquality is sufficient
But Nethardware works on Limit

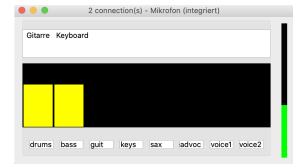
Change or optimize
Netcomponents

- Router is too far away
- not less than WIFI5
- too many net devices
- Mix<>Router is wired ?

Audio-Latency is too high
-Networkproblems
-AudioDriverproblems
-on WINDOWS take ASIO
-change Audiointerface
or Audiodriver

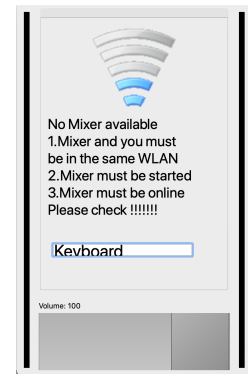


Choose the Input device
Number of
Audio Output channels
Of Inputdevice
Start of mobileInearMix.
Now all audio streams are
send to musicians on stage.

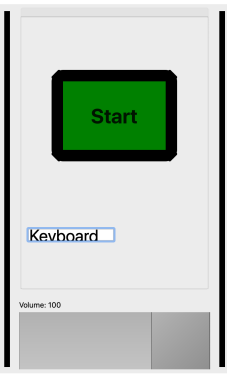


Display of all mobile device names
which are connected and active.

Audio-Channel volume and description.
This can be changed.



1. mobileInearMix is not started yet !!
Mobil InEar Mix App Push start button !!
Or
2. mobile device is not logged in same
WLAN like mixing device.
Choose correct WLAN setting in mobile device !!



OK !!
Push the
button.

Mobile workspace:
Move buttons to
adjust volume ratios. Distance to left and right ear
controls volume.
Overall volume control at the bottom

